

# The Village

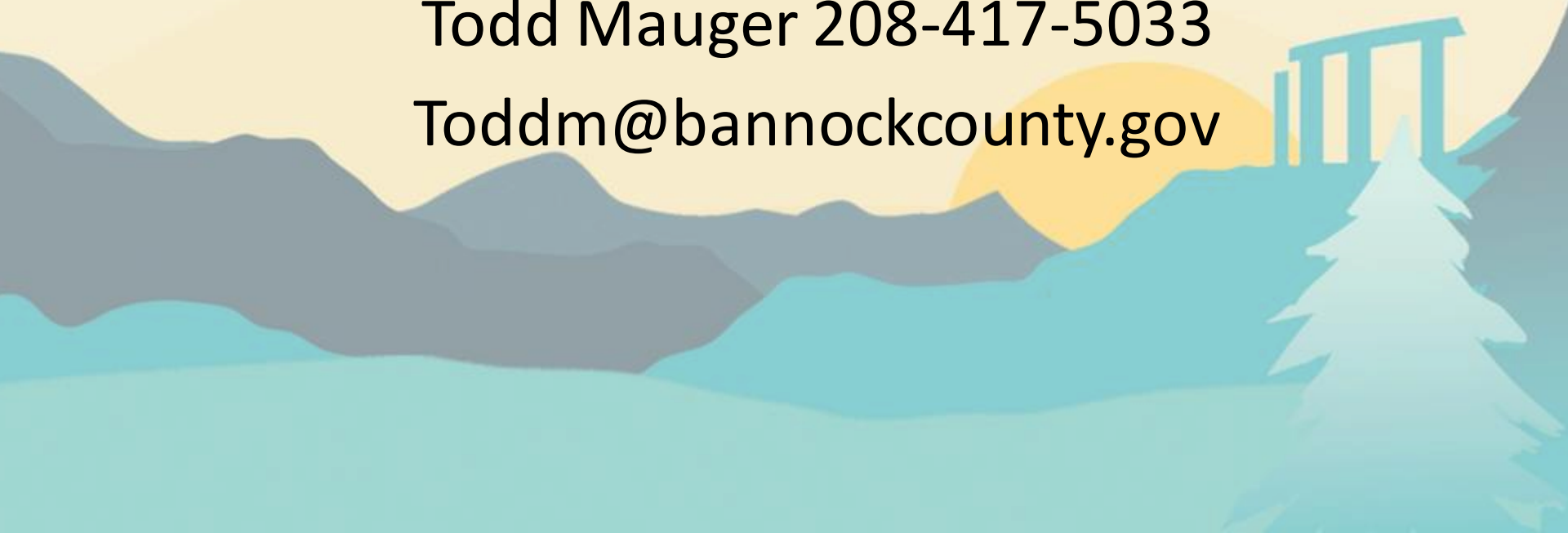
A place for Youth and Families

345 North 5<sup>th</sup> Pocatello, ID

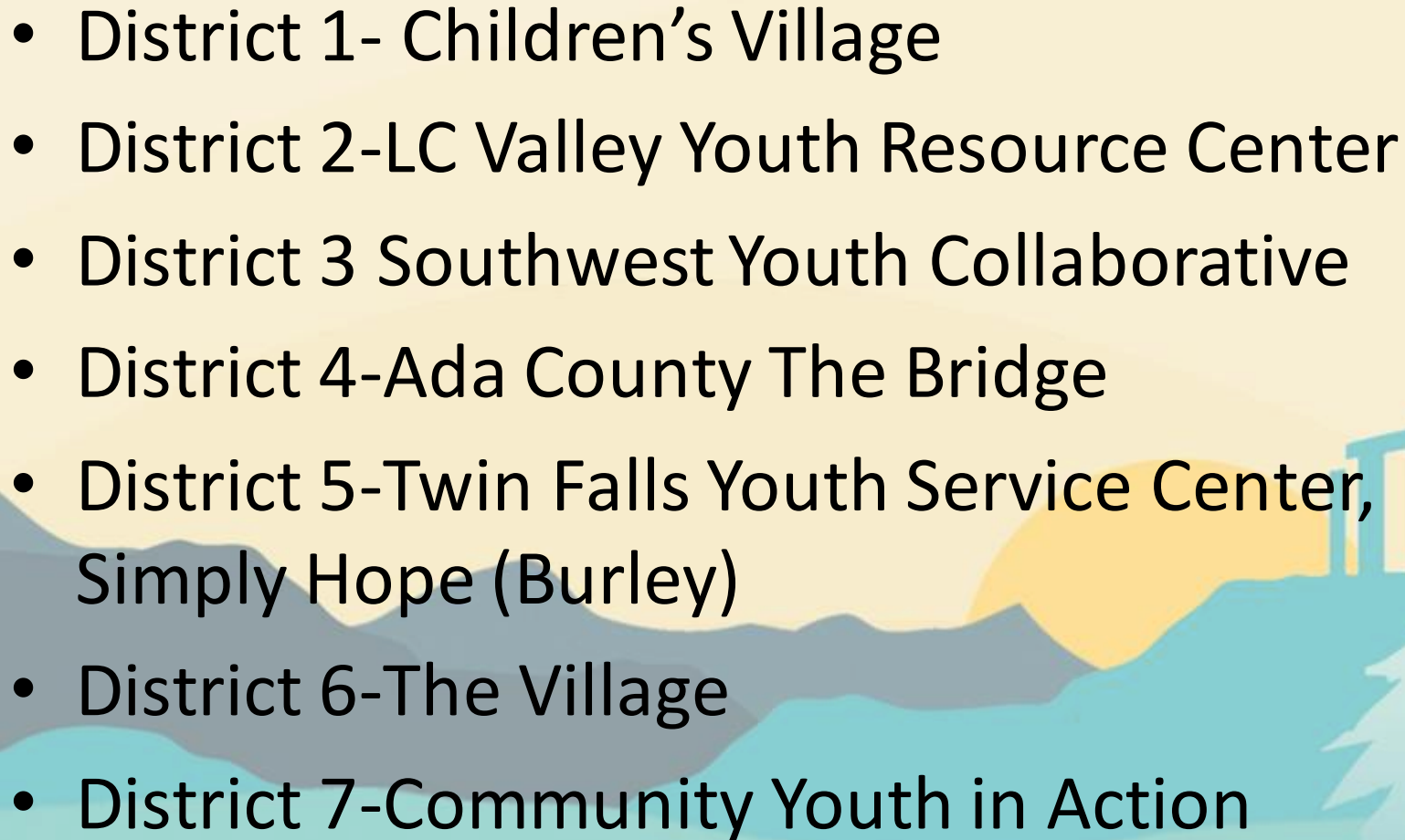
Front Desk 208-417-5020

Todd Mauger 208-417-5033

[Toddm@bannockcounty.gov](mailto:Toddm@bannockcounty.gov)



# Idaho Department of Juvenile Corrections Grant Funded Assessment Centers

- District 1- Children's Village
  - District 2-LC Valley Youth Resource Center
  - District 3 Southwest Youth Collaborative
  - District 4-Ada County The Bridge
  - District 5-Twin Falls Youth Service Center,  
Simply Hope (Burley)
  - District 6-The Village
  - District 7-Community Youth in Action
- 
- The background of the slide features a stylized landscape. On the right side, there is a large, bright yellow sun partially obscured by a blue mountain range. In the foreground, there is a blue evergreen tree. The overall color palette consists of warm yellows, oranges, and various shades of blue and teal.

# National Assessment Center Association

## Initial Goals

- Prevention of delinquency or further delinquency.
- Provision of comprehensive services to youth their families and serving as a resource center for the community.
- Creation of a conduit to share information and improve communication among different agencies
- Provision of a cost effective response to juvenile crime.
- Reduction of the amount of time between arrest and intervention by expediting processing within the system.



# Core Components

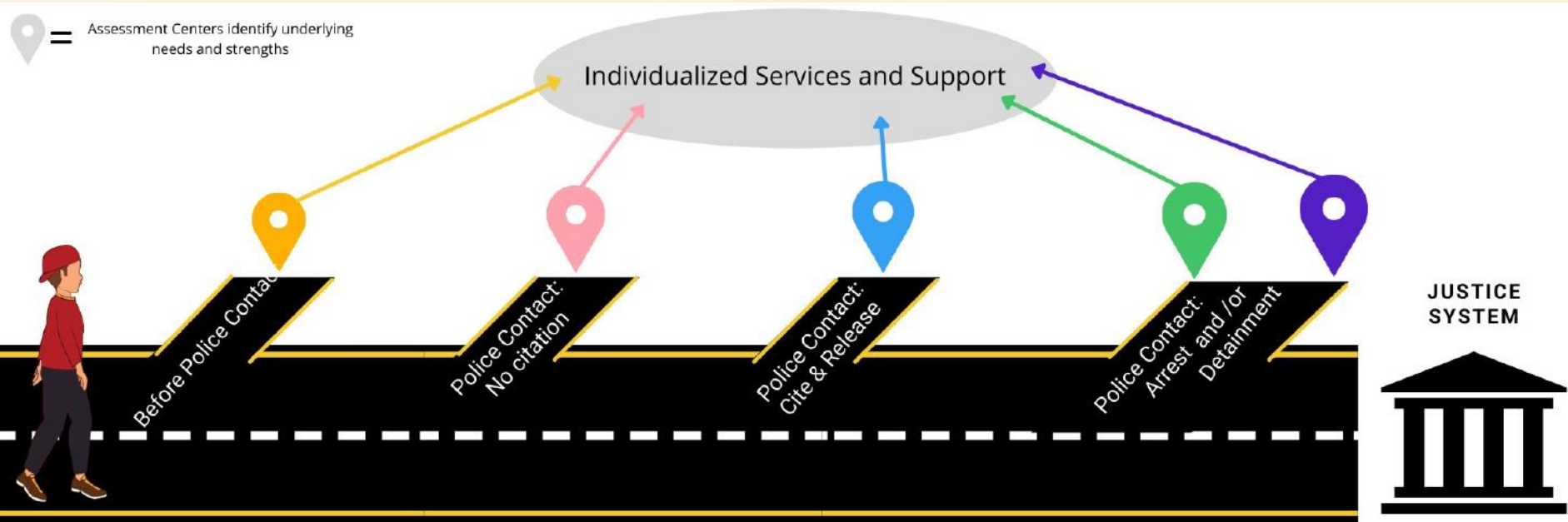
## Process Core Components

- Single Point of Contact
- Screening & Assessment
- Case Management

## Structural Core Components

- Accountability
- Staff Development and Support





- Schools
- Youth
- Family
- Hospitals
- Community

- Status offenses
- Family Conflict
- Misdemeanors
- Community-determined Criteria

- Misdemeanors
- Youngers Programs
- Felonies
- Community-determined criteria

- For youth arrested and/or detained Assessment Centers can aid in the decision of whether formal processing would neither make the public safer nor benefit the young person thus pursuing diversion
- For those moving into the formal justice system, Centers can aid in quicker connection to community services/supports

## ASSESSMENTS CENTERS AS OFF-RAMPS TO THE JUSTICE SYSTEM

# Single Point of Contact

- Centralized, Coordinated point of contact for youth and families who are struggling at home, community, or school or at risk of systems involvement.



# Current Pathways at The Village

- Self Referrals (walk ins)
- School Referrals
- Law Enforcement Referrals (No Charges)
- Child Protection (Crossover Youth Prevention)
- Law Enforcement (New Charges Citations)



# Current Screening Tools and Assessments

## Screening

- Juvenile Inventory For Functioning
- PHQ-9
- GAD-7
- CAT-2
- Columbia Suicide Severity Rating
- GAIN SS
- ASIST

## Assessments

- Psychiatric Assessments-(ISU/U of U Resident)
- Comprehensive Diagnostic Assessments- (ISU Advanced standing Interns, Local Provider referrals, YES Program Referrals)
- DD Assessments-Liberty Health Care
- Child and Adolescent Needs and Strengths (Village Staff Trained by State)
- Crisis Assessment Tool(Village Staff Trained by State)



# Case Management

- Case Management is a collaborative, strength based process aimed at ensuring the needs of youth and families identified in the screening and assessment process are met.
  - Prevention Officers (citations, self-referrals, Law Enforcement)
  - School Community Resource Workers (school referrals/Prevention Officer)
  - Child Protection Prevention Team- (CPS Pathway non-protective supervision pathway)
  - Targeted Care Coordinators (dependent upon the completion of CDA and family needs)

# Support Groups Offered

- Making Sense of Your Self Worth (Bannock Youth Foundation)
- In-depth: American Lung Association Tobacco Education Group (Southeast Idaho Public Health)
- Not on Tobacco: Tobacco Cessation (Southeast Idaho Public Health)
- Families In Action (BCJJ through Grant from Idaho Office of Drug Policy)
- Suicide Support Group 18+ (Center Counseling)

# Staff Development and Support

- Staff Support-BCJJ had 2 full-time employees and 4 part time employees that made transition from BCJJ to The Village.
- ISU Social Work, Criminology, and Sociology Interns.
- ISU/GemState AmeriCorps Service Members
- ISU MA Social Work and Counseling Interns
- Local Providers; Targeted Care Coordinators

# Staff Development and Support

- Staff Support and development are the policies, procedures, and practice that equip and support an assessment center's workforce.
  - Relationship Building (FAMILY ENGAGEMENT)
  - Motivational Interviewing
  - Youth and Family Engagement
  - Adolescent Development
  - Cultural Responsiveness
  - Sexual Orientation and Gender Identify
  - Trauma-Informed Care
  - Bias
  - Etc.

# Accountability

## Definition

- Accountability is the partnerships, processes, and procedures assessment centers have in place to ensure collaboration, inclusivity, transparency, and research-based, data driven approach in serving youth, families and communities

## Action Steps

- Information Sharing
- Information Technology & Data Collection
- Continuous Quality Improvement
- Community Need

# Youth/Families Served July 1,2023-December 1, 2023

- The Village has had contact with 257 Youth/Families
- 223 Law Enforcement Referrals
- 24 Self Referrals
- 8 School Referrals (School Counselors, Community Resource Workers)
- 7 Probation Officer Referrals
- 1 Court Referral
- 1 Medical Provider Referral

# Youth/Families Served 1<sup>st</sup> Quarter SFY 2023 (July-September 2023)

- 126 youth and families
- 89 participated in the initial screening process
- 8 School Referrals (School Counselors, Community Resource Workers)
- 7 Probation Officer Referrals
- 43 youth/families were identified and connected to clinical assessments (internal psychiatric assessments).
- Case management was provided to the 89 youth/families

# IDJC Assessment Center Video

## IDJC YoutubeVideo:

<https://www.youtube.com/watch?v=ITAlc0CKTf0&t=3s>

## National Assessment Center Website

<https://www.nacassociation.org/about-assessment-centers>