

# Idaho Behavioral Health Council

Quarterly Meeting

January 12, 2024





# IBHC Guiding Principles

## 1) Consumer and Family Voice

Because the voices of consumers of services and their families are crucial to proper implementation of the Idaho Behavioral Health Council's strategic action plan, we commit to include them as indispensable partners in program design, implementation, and evaluation.

## 2) Cross-System Collaboration

We commit to utilize an inclusive and collaborative approach in the implementation of behavioral health strategic action plan.

## 3) Promote Evidence and Best Practices

We commit to using known effective practices through the design and implementation of the strategic action plan, including best practices for funding services and supports.

## 4) Recovery and Resiliency Oriented

We commit to designing a system that focuses on the lifelong process of improving wellness and strives to assist consumers and families in reaching their full potential.

## 5) Equitable Access

We commit to implementing a system with equal access for all Idahoans regardless of race, ethnicity, gender, socioeconomic status, or sexual orientation. We commit observing all rights as defined in the Americans with Disabilities Act (ADA).

## 6) Financially Sustainable

We commit to designing and implementing a behavioral health system that is effective, efficient, and financially sustainable.

## 7) Quality, Accountability, and Outcomes

We commit to transparent and continuous evaluation of quality and outcome measures in all programs and services to achieve the best possible outcomes for Idahoans and to achieve effective/efficient use of public dollars

# Vision for Idaho's Behavioral Health System

It is our vision that adults, children, youth and their families who live with mental illness and addiction **receive the behavioral healthcare services they need when they need them.**



## ENGAGEMENT

The ability to effectively assist an individual with a behavioral health disorder relies on the system's ability to engage the individual in the system.

## PREVENTION

Delivered prior to the onset of a disorder, these interventions are intended to prevent or reduce the risk of developing a behavioral health problem.

## TREATMENT

These services are for people diagnosed with a behavioral health disorder. They are ideally evidence-based, client centered, and meet the varied needs of as many individuals as possible.

## PROMOTION

Create environments and conditions that support behavioral health and the ability of individuals to withstand challenges such as Social Determinants of Health.

## RECOVERY

These services support individuals' abilities to live productive lives in the community and can help with management of behavioral health conditions to minimize the risk of relapse or recurrence.

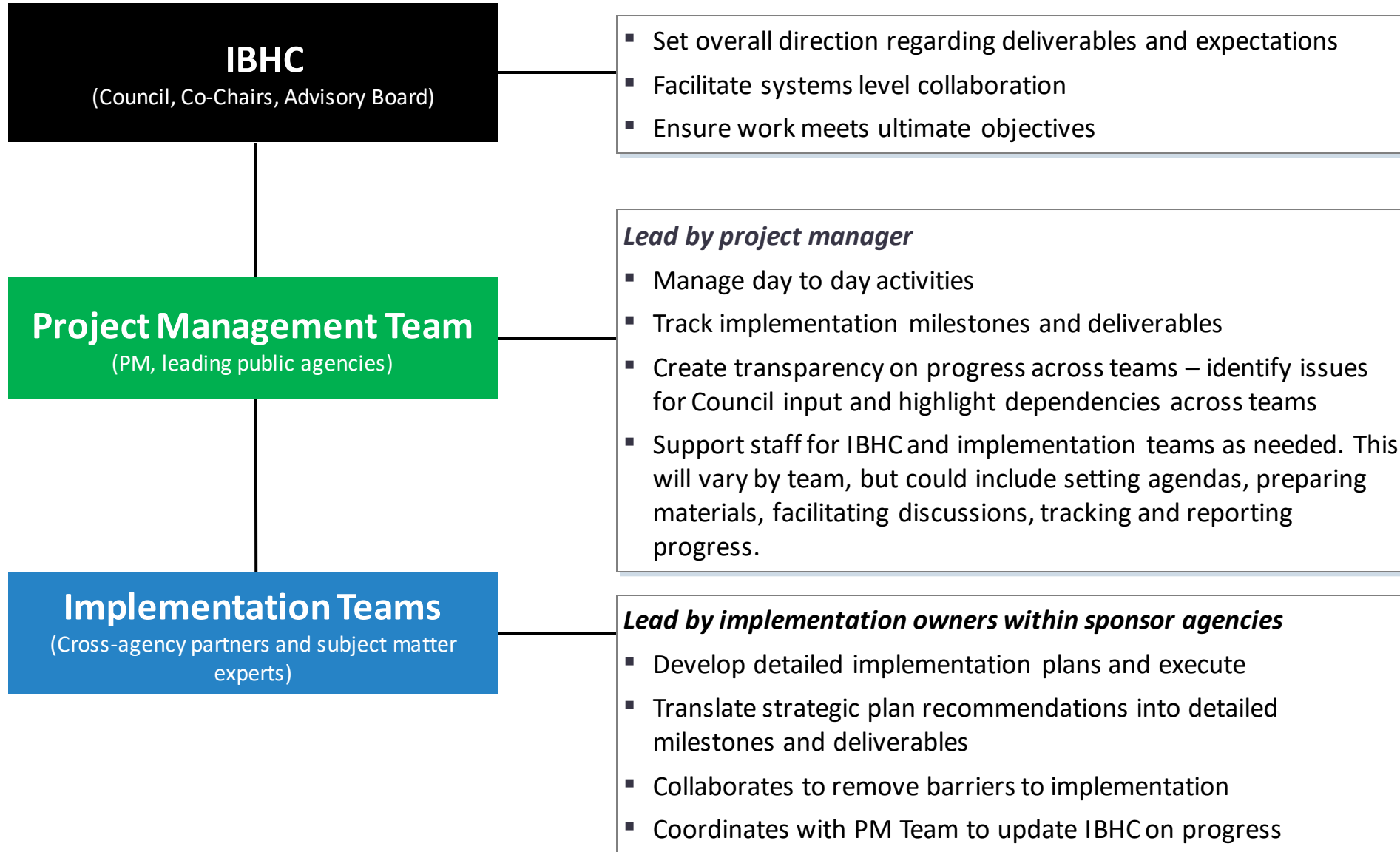


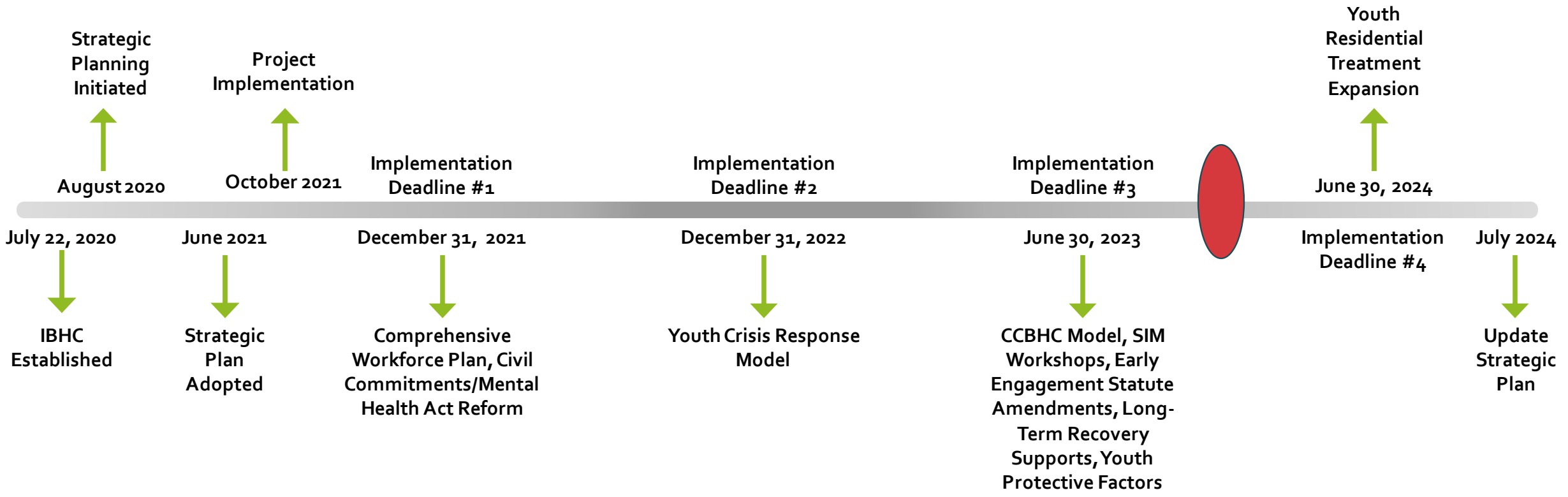
# Idaho's Behavioral Health Framework

# IBHC Priority Recommendations

RECOMMENDATION	SPONSOR	TIMELINE
<b>Infrastructure #2</b> Develop and implement a comprehensive workforce plan to increase licensed and/or certified behavioral health professionals across the full continuum of service care throughout the lifespan in Idaho.	Idaho Department of Health & Welfare	December 31, 2021
<b>Treatment #3</b> Improve Idaho civil commitment process and procedures by proposing amendments to the Mental Health Act to incorporate the action items.	Idaho Supreme Court, Idaho Department of Health & Welfare, and Commissioner Mendenhall	December 31, 2021
<b>Treatment #7</b> Develop and implement a crisis response system model for youth. Strengthen and broaden a crisis response system model for adults based on community capacity.	Idaho Department of Health & Welfare	December 31, 2022
<b>Infrastructure #8</b> Explore piloting a Certified Community Behavioral Health Clinics model.	Idaho Department of Health & Welfare	June 30, 2023
<b>Promotion #4</b> Conduct Sequential Intercept Model (SIM) Workshops in local communities across Idaho to improve local collaboration between the behavioral health and criminal justice systems and to identify opportunities to improve the local behavioral health system and the criminal justice process.	Idaho Supreme Court	June 30, 2023
<b>Engagement #4</b> Review and draft or amend statutes and rules to promote earlier engagement of justice involved individuals with behavioral health treatment needs.	Idaho Supreme Court and Idaho Department of Correction	June 30, 2023
<b>Recovery #3</b> Identify services to support long term recovery for individuals in Idaho.	Idaho Department of Health & Welfare	June 30, 2023
<b>Recovery #5</b> Identify opportunities to enhance protective factors and promote long-term resiliency in children and youth who have experienced trauma.	Idaho Department of Juvenile Corrections and Idaho State Department of Education	June 30, 2023
<b>Treatment #1</b> Increase residential treatment options for youth to receive appropriate level of care based on their needs with a preference for services within Idaho.	Idaho Department of Juvenile Corrections and Idaho Department of Health & Welfare	June 30, 2024

# IBHC Implementation Roles







# IDAHO BEHAVIORAL HEALTH COUNCIL (IBHC)

[Meetings](#) [About the IBHC](#) [Idaho Opioid Settlement Fund](#) [Resources](#)

Our vision is that adults, children, and their families who live with mental illness and addiction receive the behavioral health care services they need when they need them. We believe if this vision is realized, then people in Idaho will have a better quality of life, reduced risk of involvement with the criminal justice system, and make our communities healthier, safer places to live.



## Contact the IBHC

For questions or concerns, please email the IBHC.

### Next Meeting

January 12, 2024 - 3:15 pm to 5 pm MST

[Agenda](#)

### Upcoming Meetings

April 12, 2024

### Livestream meetings on:

[Idaho Behavioral Health Council - YouTube](#)

### Physical Location

Lincoln Room (Basement Level)  
Idaho Supreme Court  
451 W. State Street; Boise, ID







# Idaho Behavioral Health Council 2021-2023 Strategic Action Plan Update January 2024



## IBHC Vision

It is our vision that adults, children, youth and their families who live with mental illness and addiction receive the behavioral healthcare services they need when they need them.

# Infrastructure #2: Behavioral Health Workforce Plan

**Adam Panitch, LCSW, CAPM**

Bureau Chief, Division of Behavioral Health  
Department of Health & Welfare





# CENTER OF EXCELLENCE

*Division of Behavioral Health*

**DBH CoE**

[https://healthandwelfare  
.idaho.gov/coe](https://healthandwelfare.idaho.gov/coe)



## **Recovery Coach Academy**

<https://www.idahorca.com>

# Infrastructure #3: CCBHCs

**Ross Edmunds**

Administrator, Division of Behavioral Health  
Department of Health & Welfare



## CCBHCs Provide Nine Core Services Directly or Through Formal Partnerships

Crisis Services



Outpatient Mental Health & Substance Use Services



Screening, Diagnosis & Risk Assessment



Person- & Family-Centered Treatment Planning



Psychiatric Rehabilitation Services



Community-Based Mental Health Care for Veterans



Outpatient Primary Care Screening & Monitoring



Peer, Family Support & Counselor Services

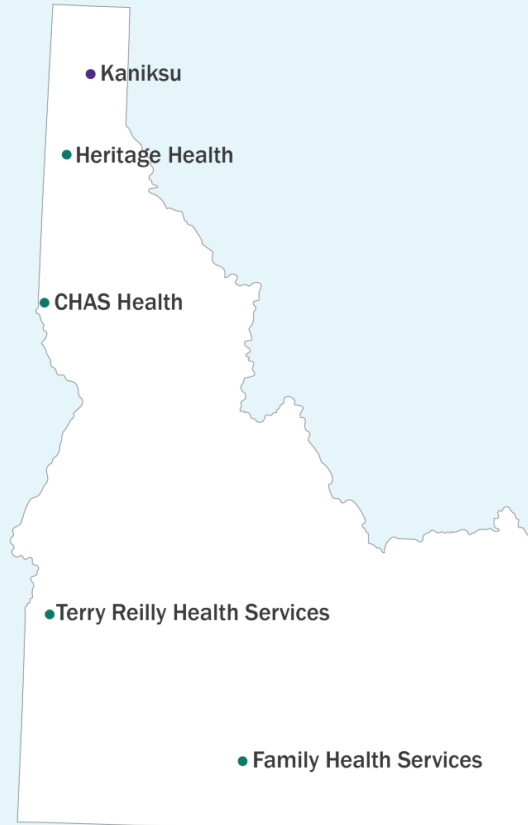


Targeted Case Management



## CCBHC Locations

- 2022 SAMHSA Grant Recipients
- 2023 SAMHSA Grant Recipients



## SAMHSA Implementation Grants

4 years for \$1m

**Fall 2022**

Heritage Health

CHAS

Terry Reilly (Caldwell)

Family Health Services

**Fall 2023**

Kaniksu

Promotion #4:  
Sequential  
Intercept  
Model  
Mapping

**Cheryl Foster**  
IBHC Project Manager





# Statewide SIM Report

## Recommendations for Statewide Implementation

- Increase community outreach and understanding of 9-8-8 capabilities
- Increase messaging around [findhelp.org](https://findhelp.org)
- Employ social workers alongside public defenders early in the process
- Build and staff a forensic psychiatric facility
- Use IBHC as a convening resource for highlighting and sharing local best practices

# Engagement #4: Early Engagement

**Scott Ronan**

Director, Justice Services  
Administrative Office of the Courts



# Treatment #1: Youth PRTFs

**Ross Edmunds**

Administrator, Division of Behavioral Health  
Department of Health & Welfare



# Treatment #3: Civil Commitments

**Judge Jessica Lorello**  
Idaho Court of Appeals



# Treatment #7: Crisis Response System

**Shannon Moskitis**  
Pathways of Idaho



# Recovery #3: Long Term Recovery Supports

**Norma Jaeger**  
Recovery Idaho



Recovery #5:  
Youth  
Resilience and  
Protective  
Factors

**Todd Mauger**

Chief Probation Officer  
Bannock County

The Village – Safe Teen Assessment Center



Recovery #5:  
Youth  
Resilience and  
Protective  
Factors

**Officer Morgan Ballis**

School Resource Officer  
Blaine County School District  
Hailey Police Department

Idaho Association of School Resource Officers

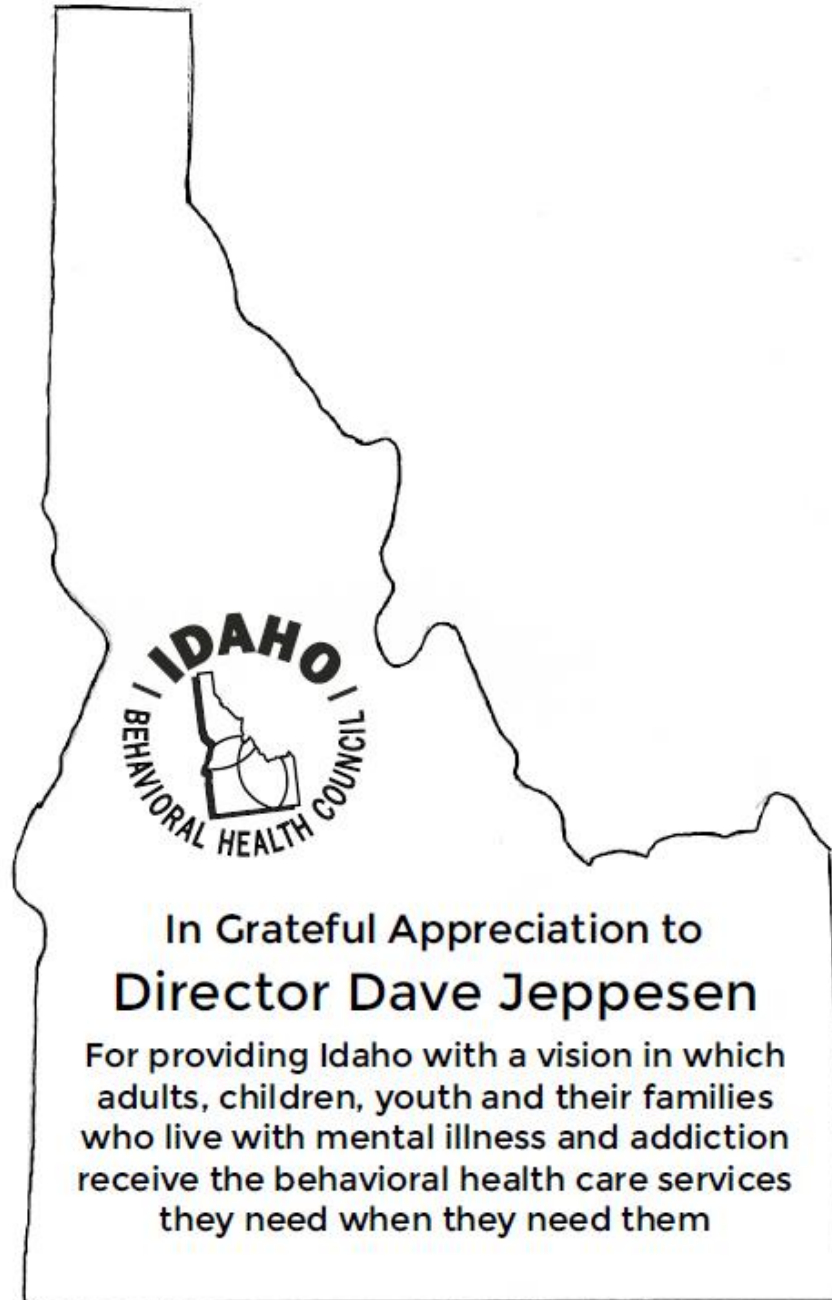




# Next Steps



Thank You  
Director  
Jeppesen!



# Questions or Discussion



# Meeting adjournment

